



PENNSYLVANIA/SOUTH JERSEY

And let us consider how we may spur one another on towards love and good deeds.

Hebrews 10:24



BUILDING OUR FUTURE

BRN RESPONSE & RELIEF CENTER BUILDING CAMPAIGN



Baptist Resource Network
Pennsylvania/South Jersey



ACCELERATING KINGDOM MOVEMENT

WELCOME TO PA/SJ DR!



Embarking on the journey with Southern Baptist Disaster Relief (SBD) has the potential to change your life forever. SBD is a national cooperative effort between 41 state conventions, Southern Baptist entities, the Canadian Baptist Convention, and local churches. PA/SJ Disaster Relief is a part of SBD's Region 3, which is comprised of the Baptist Resource Network of Pennsylvania/South Jersey, Baptist Convention of Maryland/Delaware, Baptist Convention of New York, and Baptist Churches of New England.

Locally in Pennsylvania and South Jersey, Baptist Resource Network (BRN) Disaster Relief is the hands on ministry provided by 600 volunteers from 95 local churches, serving those affected by disasters of every kind. These volunteers are trained, prepped, and ready to deploy for disaster response. They may respond within Pennsylvania or New Jersey, or be called to respond in other states or Canada.

To meet the growing needs of Disaster Relief in Pennsylvania and New Jersey, the Baptist Resource Network has launched a capital campaign to build a new storage warehouse and ministry center in Winfield, Pennsylvania, on the property of Winfield Baptist Church, where already, several disaster relief units are stored. The storage warehouse would provide protection from the environment, as well as provide another space for training and mission team stays.

This campaign will allow PA/SJ Disaster Relief the ability to build, manage, and outfit its own Disaster Relief facility. The facility will allow for the continued growth and gospel influence of the disaster relief work in and across our region.

A disaster is defined as anything that causes human suffering or creates human needs that the disaster survivors cannot alleviate themselves. In a similar way, we cannot do this work without your generous donations. Your support of this campaign will accelerate Kingdom movement by expanding the capacity and ability for PA/SJ Disaster Relief to be the light of Jesus in response to disasters, locally and nationally.

Thank you! -- Kenton Hunt, PA/SJ Disaster Relief Director

GREAT IS YOUR REWARD

"And whoever gives one of these little ones even a cup of cold water because he is a disciple, truly, I say to you, he will by no means lose his reward" (Matthew 10:42 ESV).



TABLE OF CONTENTS

WELCOME	Page 02
WHY BUILD?	Page 04
HIGHLIGHTS	Page 05
EQUIPMENT OVERVIEW	Page 08
BUILDING OUR WISH LIST	Page 09
BUILDING OVERVIEW	Page 10
DETAILED DESCRIPTION	Page 12
PROJECT TIMELINE	Page 14
SHARING THE EFFORT	Page 16
PROJECT INVESTMENT	Page 18
HOW TO GIVE	Page 19



WHY BUILD?

Many disaster relief organizations serve only a humanitarian purpose, but that is not us. We are compelled by Christ's love for all mankind AND His desire that no one should perish. We keep our focus by nurturing our individual relationship with Jesus Christ in the context of a local body of believers who recognize and call out our giftedness in service to God and our neighbors.

"There are an estimated 14 million people within Pennsylvania/South Jersey who do not have a relationship with Jesus Christ. Moreover, vital statistics indicate that every 4.2 minutes, one person in PA/SJ dies and enters an eternity without Jesus," said Barry Whitworth, executive director of the Baptist Resource Network. "These statistics break our hearts. We are so thankful for how Disaster Relief opens doors for sharing the Gospel!"



Disasters happen spontaneously and are very seldom planned, says Kenton Hunt, state disaster relief director for the Baptist Resource Network (BRN) of Pennsylvania/South Jersey. "When disasters happen, we're an organization – Southern Baptist Disaster Relief – that is there at the beginning. A disaster happens today, we're going to try and be there tomorrow. You don't necessarily go into a response knowing all the details, so that involves walking by faith."



HIGHLIGHTS:

- The need for disaster relief assistance will not go away...
- This storage solution will provide better care for current and future assets...
- Teams can be trained and be better prepared for disaster relief deployment...
- Prepared teams can better advance the gospel...
- Local churches can increase their missional footprint...
- Centralized offices can increase opportunities for more partnerships with state and national agencies...

**“WE DON’T SCHEDULE
DISASTERS, BUT WE
NEED TO BE READY TO
GO AT A MOMENT’S
NOTICE.”**

--KENTON HUNT, PA/SJ DR DIRECTOR

1. DISASTER PREPARATION

At any moment, earthquakes, hurricanes, tornadoes, wildfires, droughts, floods, and other major disasters threaten to destroy communities. Disaster Relief volunteers are trained in advance to provide support, hope, and healing to survivors and first responders. Often they are the first to arrive on the scene of the disasters. Although physical in nature, disaster relief projects often open the door for spiritual impact, for both the individuals the teams are serving and the team members themselves.

Bill Hoops, Disaster Relief chaplain, said he loves disaster relief because it is such a visible ministry to those affected by disasters.

“They see people feeding people. They see people pulling trees off of houses. They see people cleaning up mold from basements,” he said. “For that reason, there are more salvations arising out of disaster relief than most ministries.”

2. ASSETS PROTECTION

PA/NJ Disaster Relief currently has several units that need to be protected from poor weather conditions. This will prevent unnecessary repair costs and preserve the life of the equipment. The warehouse will provide temperature-controlled warehouse space for the feeding units, Rapid Response Kitchen, laundry units, chainsaw/mud-out recovery units, command/communications unit, Western Shelters, and so much more. The warehouse will also give a protected space to perform ongoing maintenance and care.

3. LOCAL CHURCH CONNECTION

The warehouse will provide additional training space and mission team accommodations, making it a great asset for local churches.

“Disaster Relief is a great way to be the hands and feet of Jesus. The work of DR helps people who have an immediate need and connects them to local churches,” said Charles Blachford, pastor of Bux-Mont Baptist Church in Hatfield, Pennsylvania. “We have hosted DR [trainings] at our church and have had several members volunteer over the past month because the work is so important.”



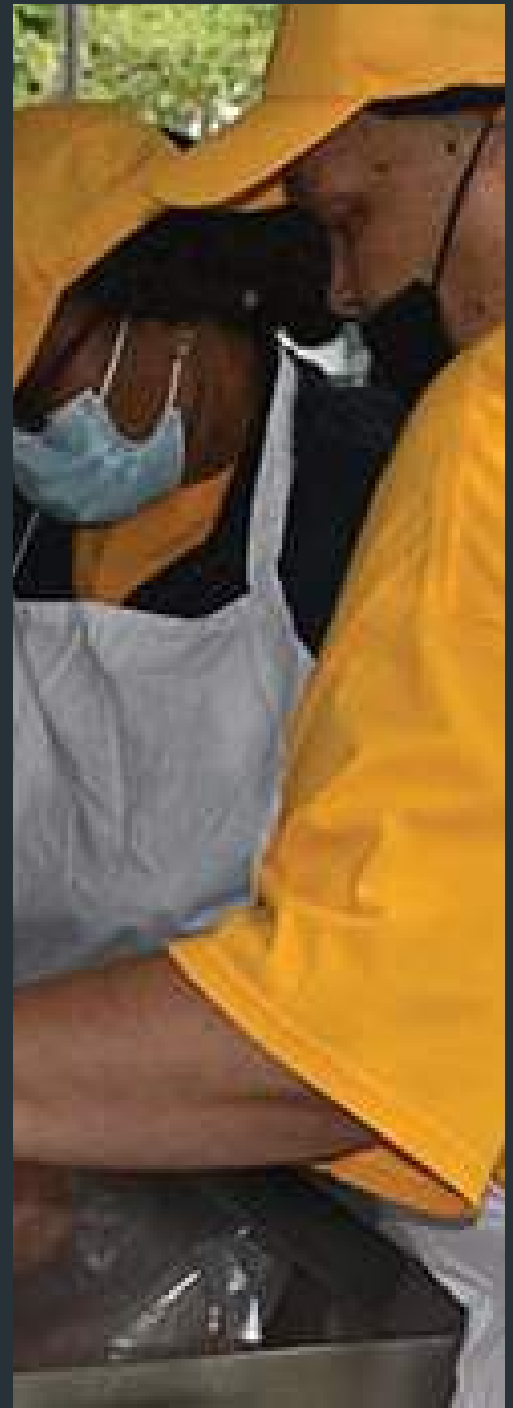
4. STRONGER COALITIONS

PA/NJ Disaster Relief (DR) partners with 41 Southern Baptist state conventions through Southern Baptist Disaster Relief as well as Southern Baptist Send Relief, the compassion ministry arm for Southern Baptists. Because of this national focus, volunteers from throughout the whole nation participate in projects in our region.

PA/NJ DR also has many other partners, including the Pennsylvania and New Jersey Volunteer Organizations Active in Disaster (VOADs), which is comprised of dozens of disaster/crisis relief organizations in Pennsylvania/New Jersey. Some of these commonwealth organizations include Keystone Emergency Management Association (KEMA), Pennsylvania Emergency Management Agency (PEMA), and the Baptist Resource Network of Pennsylvania/South Jersey. DR also works with the American Red Cross, Salvation Army, and various government agencies.

PA/NJ DR constantly is in training mode, whether training new volunteers or participating in training exercises with other organizations. Recent trainings have included exercises with the Pennsylvania Department of Human Services, American Red Cross, and a federal penitentiary. DR volunteers also served at the Serve Tour sponsored by Send Relief and the Baptist Resource Network, as well as at the launch of a new immigration center in Camden, N.J.

DR Director Kenton Hunt, who has also served as VOAD president, is the recipient of the 2014 National Distinguished Service Award of Southern Baptist Disaster Relief, and in 2022, received VOAD's Shirley Norman Award, which is given annually during the PA VOAD conference to a VOAD member who best exhibits a spirit of commitment to the service of others and the advancement of VOAD throughout the Commonwealth of Pennsylvania. In addition, the PA VOAD was presented with the 2022 State/Territory VOAD of the Year Award during their National VOAD Conference.





EQUIPMENT OVERVIEW

Over the years, PA/SJ Disaster Relief has acquired several units for use locally and around the United States. PA/SJ DR also has access to other units owned by like-minded organizations. Here is the current list of equipment:

2 Feeding Units

8 Recovery Units

3 Shower/Laundry Units

1 Command/Communication Unit

2 Western Shelters

1 Fuel Trailer

1 Pressure Wash Trailer

2 Motor Vehicles

1 Water Purification Unit

3 Auxiliary Trailers

= 24 UNITS

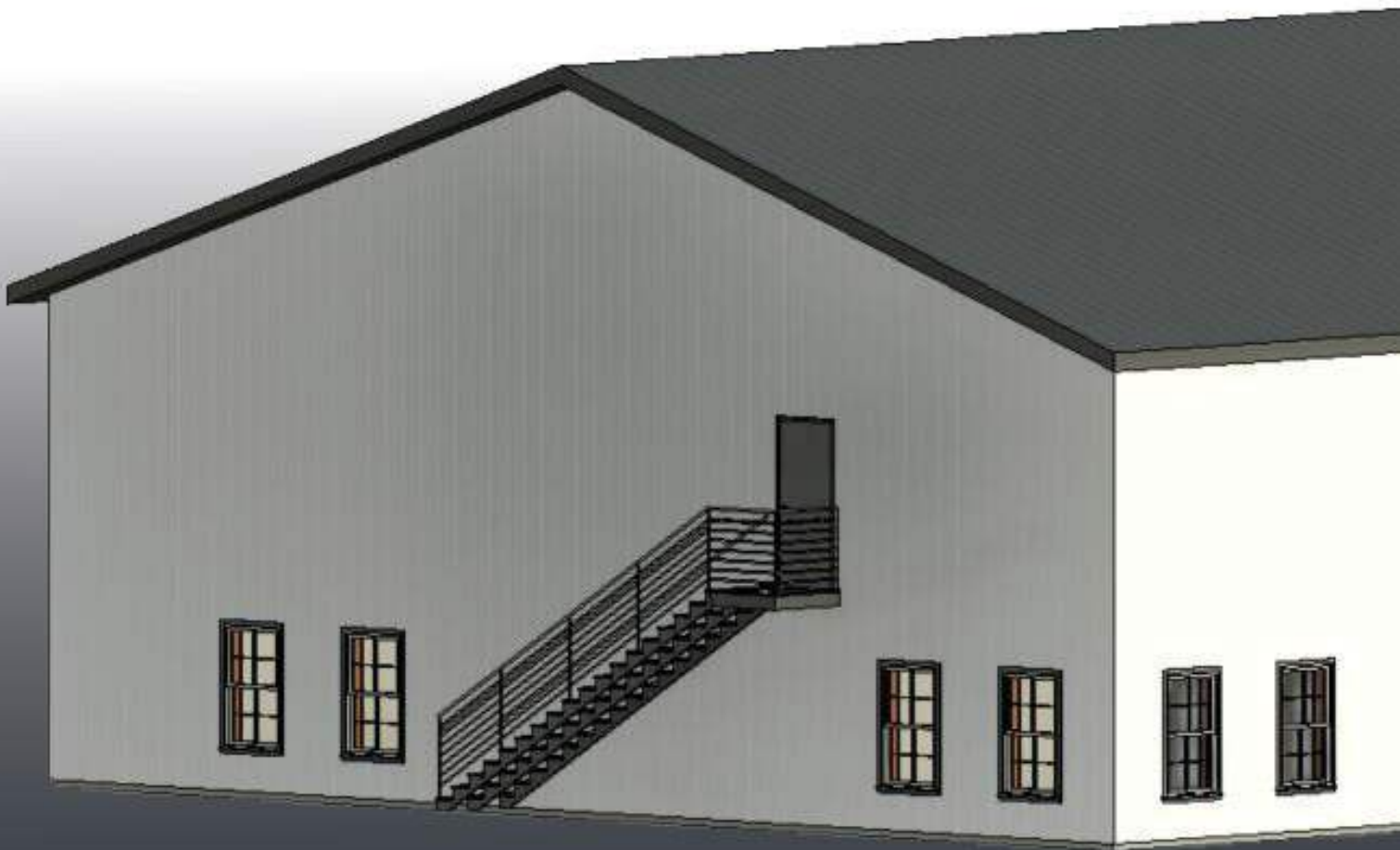
BUILDING OUR FUTURE WISH LIST:

- » 60' x 120' steel pole barn
- » Insulated walls and ceiling
- » Heated floor
- » Floor space for two semi-loads of pallets and about 12 trailers
- » 14' high pass-thru doors
- » Bunks for 16 on second floor
- » Additional cot space for 16 on first floor
- » Toilet and shower on both floors
- » Kitchenette on first floor
- » Small office

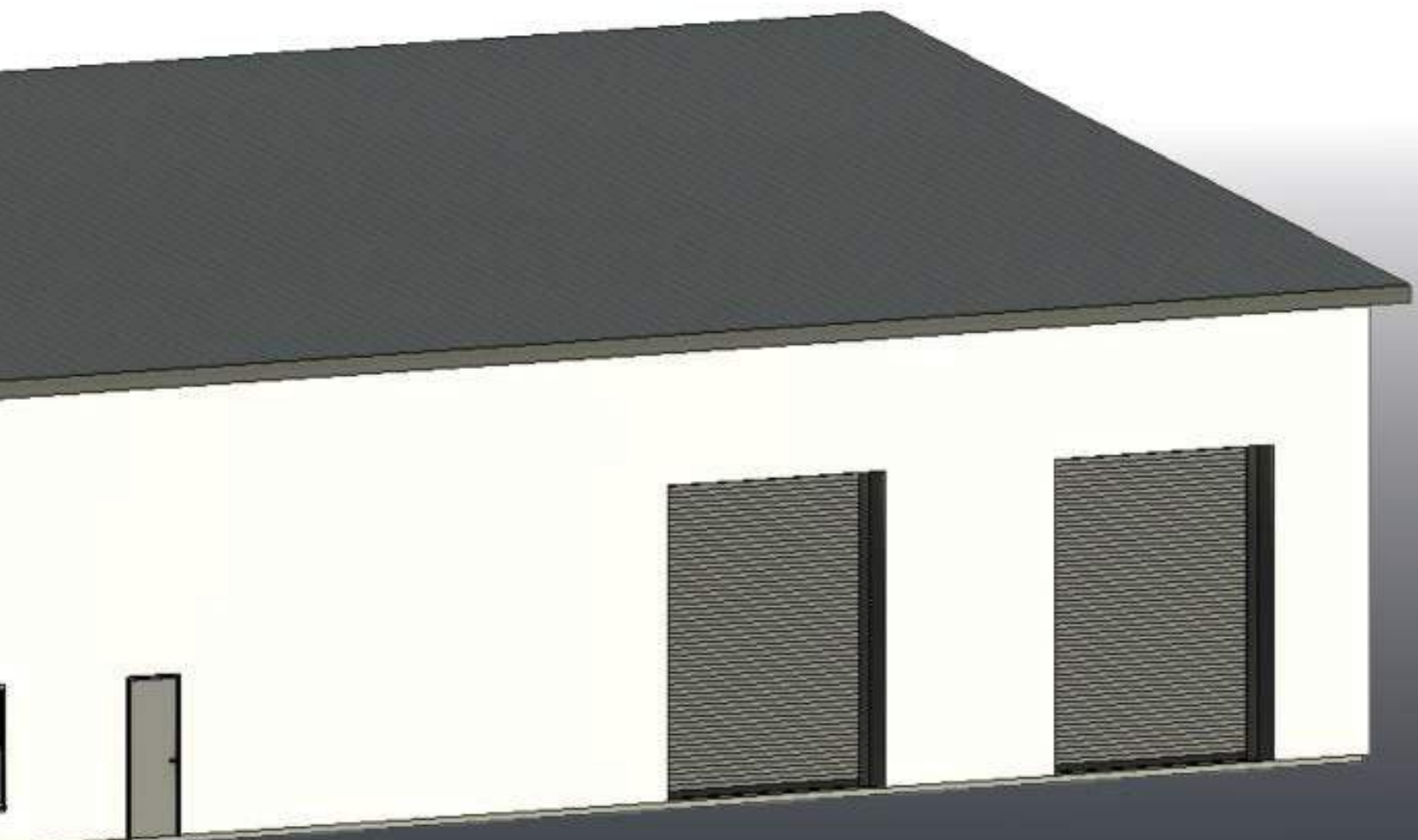


BUILDING OVERVIEW

The Disaster Relief Ministry Facility will be a two-story structure located on the property of Winfield Baptist Church (330 State Rte 304 Winfield, Pennsylvania). The Disaster Relief building would be a 60' x 120' building that will be used for training, lodging, planning, storage, asset maintenance, and much more. In addition to the vehicle storage, the Disaster Relief building will have seven other rooms, which will provide training and accommodations space for volunteers.



Winfield Baptist Church has been a strong supporter of BRN Disaster Relief. They have recently earned the “Ready Church” award, which recognizes their preparedness to respond to local disasters.

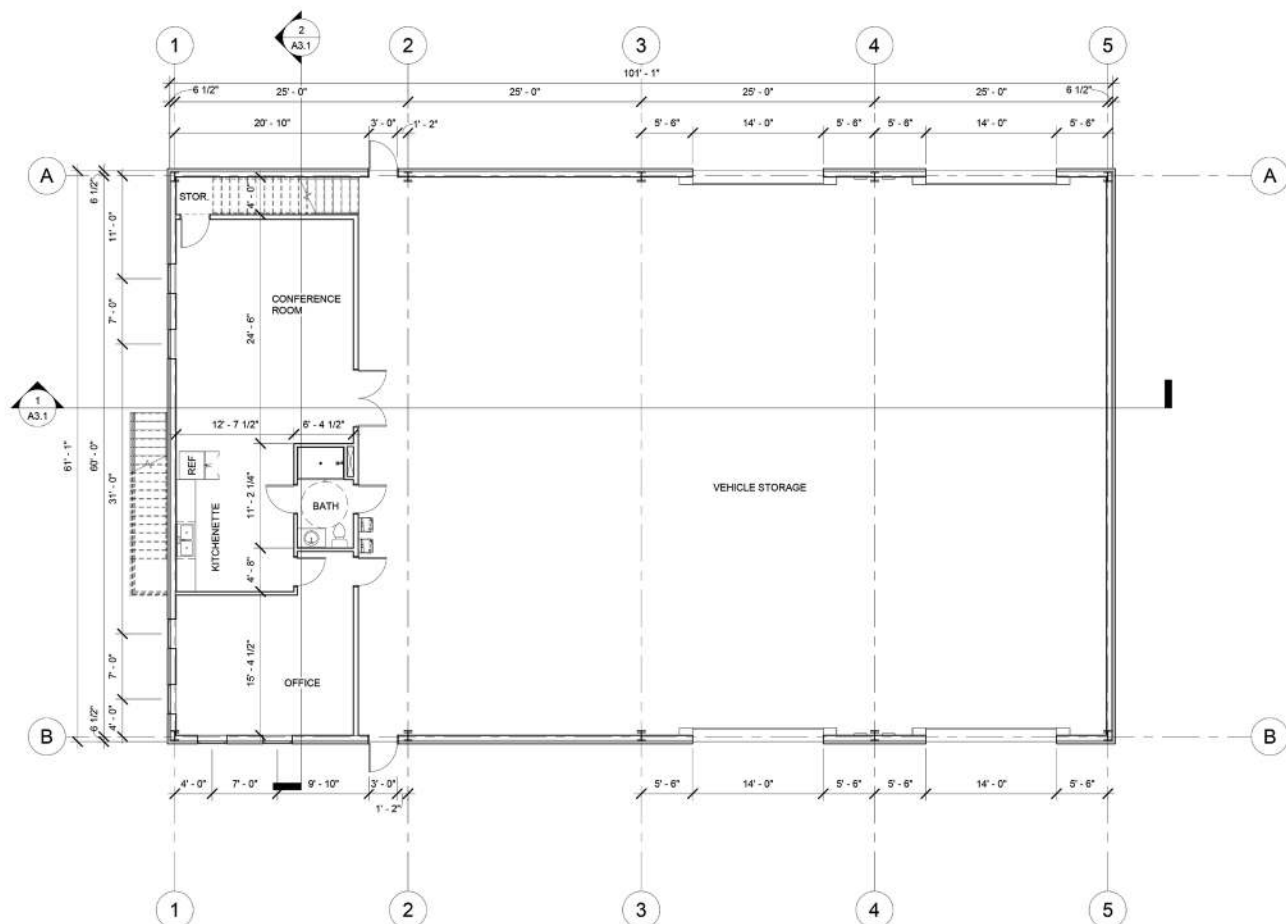


CURRENT GOAL:

\$500,000

DETAILED DESCRIPTION

MAIN LEVEL

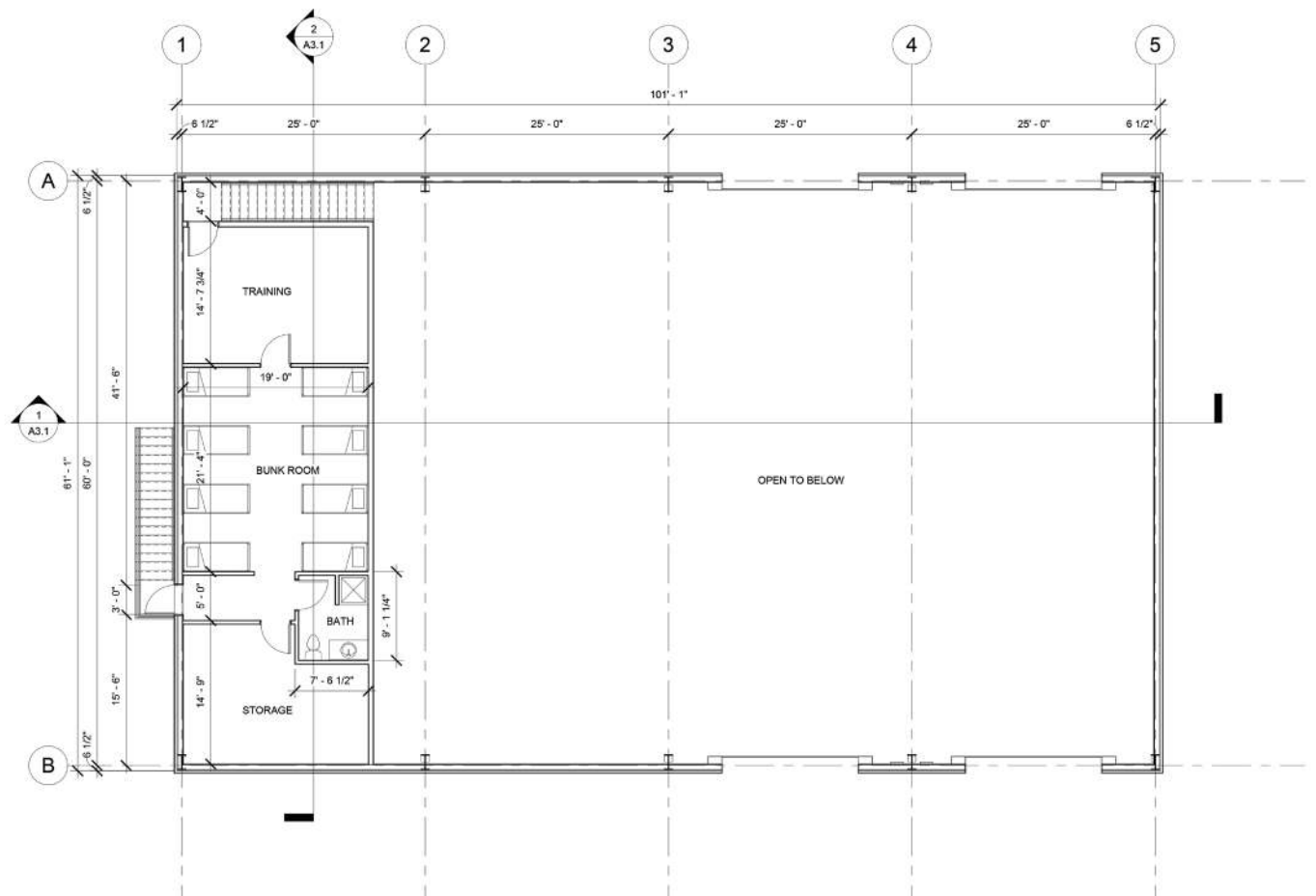


DETAILS

- Asset Maintenance Space
- Inventory Storage Space
- Pallet Storage
- Office
- Kitchenette
- Conference Room
- Bathroom and Shower
- Drive-Through Doors
- Vehicle Lift

In addition to disaster relief work and training, this facility can be used by BRN churches for their own overnight training and retreats and by traveling disaster relief teams who need to overnight on their way to other locations.

UPPER LEVEL



DETAILS

- Training Room
- Bunk Room (16 beds)
- Bathroom and Shower
- Changing Room
- Access to the Main Level

PROJECT TIMELINE

....2023... Phase One



**CONCEPTING, PRE-
PLANNING, &
EXECUTIVE BOARD
APPROVAL**



COMPLETED

....2023-2024... Phase Two

RAISE \$360,000

To prepare for the construction of a Steel Enclosed Structure (60'x120'), concrete pad, well, and septic

-Construction will begin here...



....2025-2026... Phase Three

RAISE \$100,000

Complete interior construction of rooms and office with volunteer labor

CAUTION



**HARD HAT
REQUIRED**

*....2026... Phase Four***RAISE \$40,000**

Purchase forklift, vehicle lift, and pave the lot around the building

*....Beyond... Phase Five***RAISE \$1 MILLION**

Establish an endowment fund to ensure continued DR funding for the future

“BE READY FOR EVERY GOOD WORK...
OUR PEOPLE MUST ALSO LEARN TO
DEVOTE THEMSELVES TO GOOD
WORKS FOR CASES OF URGENT
NEEDS, SO THAT THEY WILL NOT BE
UNFRUITFUL” (TITUS 3:1C, 14 HCSB)

SHARING THE EFFORT

IMAGINE HOW EASILY THIS IS ACCOMPLISHED
WHEN WE WORK TOGETHER!

Goal: 300 donors give \$1,500/year for three years

Step 1 – Build the Disaster Relief Ministry Center Raise \$500,000 (Year 1)

THE MATH:

300 donors (individual, couple, small group, or church)
x \$1,500 each (gathered during a year)
\$450,000

+ \$50,000 matching fund from BRN
\$500,000

In Phase 1, we are seeking a 1-year commitment.

Step 2 – Build the Future of BRN Disaster Relief Raise \$1 million (Years 2-3)

THE MATH:

300 donors (individual, couple, small group, or church)
x \$3,000 each (gathered over two years)
\$900,000

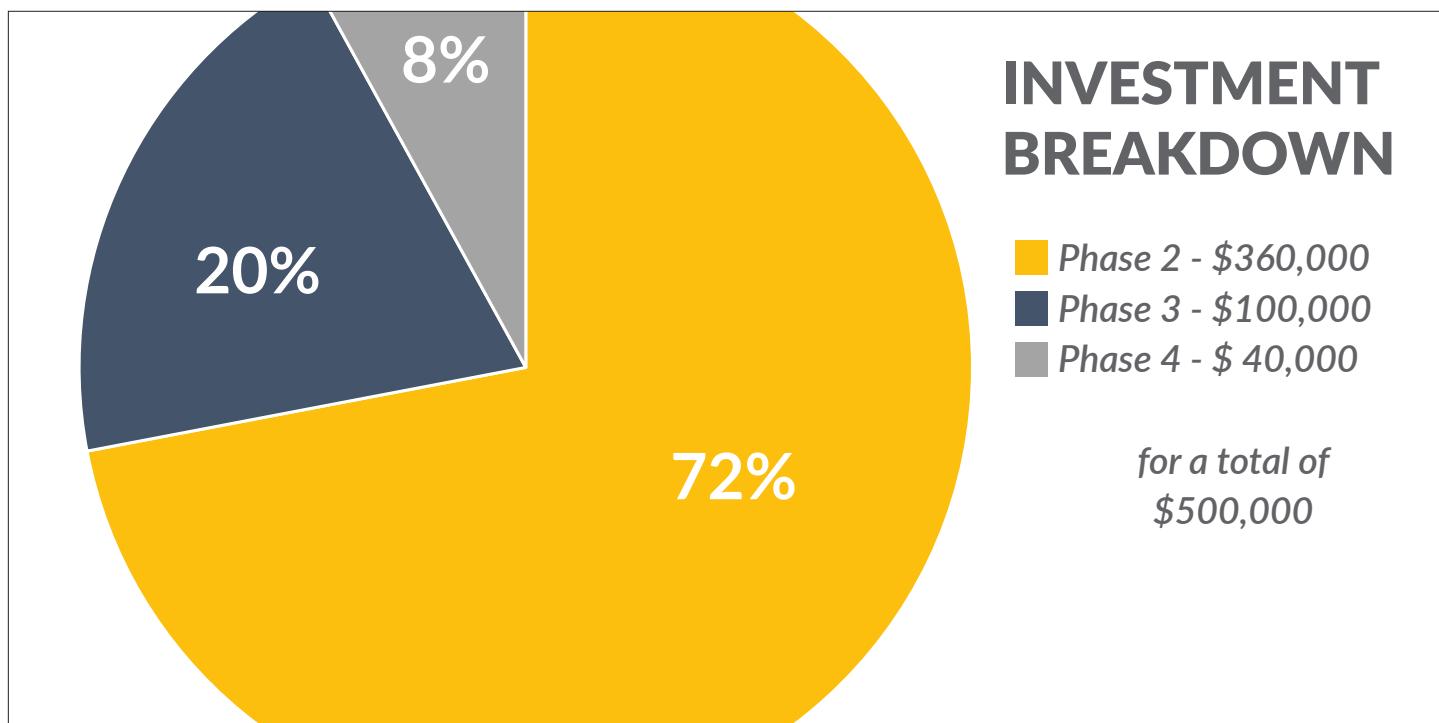
+ \$100,000 misc donations from non-BRN Partners
\$1,000,000

In Phase 5, we are seeking recommitment for the next two years.



PROJECT INVESTMENT

The chart below reflects the investment breakdown for the Phases 2-4:



PHASE 5: \$ 1 MILLION

WHY A \$1 MILLION ENDOWMENT?

An endowment is simply an investment tool where the principal of funds is invested and the earnings from the investment are used to fund strategic efforts. The fund provides an annual, or perpetual, source of revenue. This \$1 million would ensure that PA/NJ Disaster Relief has funds every year to care for its assets (trailers, equipment, and facility), train volunteers, and funds for disaster response.



HOW TO GIVE



ONLINE:

www.brnunited.org/dr

BY MAIL:

Make a check payable to Baptist
Resource Network and mail to:

Baptist Resource Network
4620 Fritchey Street
Harrisburg, PA 17109

Check memo should read
"DR Building Fund"

CONTACT INFORMATION:

Project Details:

Kenton Hunt,
Director of Disaster Relief
(570) 772-2357
kentonh@brnunited.org

Giving Details:

BRN Help Desk
(717) 652-5856
helpdesk@brnunited.org

Thank you!



*Thank you for your partnership
in the Gospel!*

BAPTIST RESOURCE NETWORK OF PENNSYLVANIA/SOUTH JERSEY

4620 Fritchey Street
Harrisburg, PA 17109
(717) 652-5856 | helpdesk@brnunited.org
www.brnunited.org