



BAPTIST RESOURCE NETWORK OF PA/SJ

Annual Business Session & Gathering, October 4, 2022

**EVERY 4.2 MINUTES, A PERSON IN
PA/SJ DIES WITHOUT CHRIST!**

SHOW

WHO'S ON YOUR WATCH?

LET'S SHOW THEM CHRIST'S LOVE BEFORE IT IS TOO LATE!



**Baptist Resource Network
Pennsylvania/South Jersey**



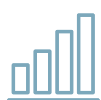
ACCELERATING KINGDOM MOVEMENT

The **SIMPLE** Solution for **MINISTRY** Funds

Makes complex investment decisions simple and provides ministries the freedom to focus on what matters most.

What is The Ministry Fund?

The Ministry Fund is a professionally managed and morally screened investment fund designed specifically for long-term ministry dollars. It is strategically structured to provide reliable income for ministry, grow the investment to offset inflation, and remain true to Christian principles.



INSTITUTIONAL QUALITY

Seeking the best management options, The Ministry Fund offers access to institutional fund managers and asset classes.



CHRISTIAN PERSPECTIVE

Holding to Christian values, The Ministry Fund seeks to avoid investing in companies that profit from activities counter to God's Word.



LONG-TERM RECORD

Investing for over 35 years, The Ministry Fund has provided consistent investment management over multiple market cycles.



RELIABLE INCOME

Knowing the importance of consistent funding, The Ministry Fund is designed to provide reliable income on a quarterly basis.

Get Started Today!

PHONE: 470.851.2366 • **EMAIL:** contact@theministryfund.org • **WEB:** theministryfund.org



BAPTIST RESOURCE NETWORK OF PA/SJ

52nd Annual Meeting of the
Baptist Resource Network of PA/SJ

SHERATON HARRISBURG HERSHEY HOTEL

4650 Lindle Road, Harrisburg, Pennsylvania

"I give you a new command: Love one another. Just as I have loved you, you are also to love one another" (John 13:34 CSB).



Baptist Resource Network
Pennsylvania/South Jersey



ACCELERATING KINGDOM MOVEMENT

OCTOBER 4, 2022

CONTENTS

ACCELERATE

*is a publication of the
Baptist Resource Network of
Pennsylvania/South Jersey and
BRN United.*

BAPTIST RESOURCE NETWORK

4620 Fritchey Street
Harrisburg, PA 17109
(717) 652-5856
helpdesk@brnunited.org
www.brnunited.org

BARRY WHITWORTH . . . Executive Director

SHANNON BAKER Editor/Director of
Communications

MACALA MAYS Associate Editor

LAUREL GRIMES Communications
Specialist

BRN United is a member of the Association
of State Baptist Publications, the Baptist
Communicators Association, and the
Evangelical Press Association.

ACCELERATE CONFERENCE

Welcome	5
Facilities Map	6
Conference Schedule	7
Program Participants	8
Keynote Speakers	10
Musical Guests	11
Breakout Sessions	12
Panel Discussion	31
Sponsors and Vendors	33
Southern Baptist Glossary	35
Mission Strategy	36
#LovePASJ Theme	37
Introducing Pastoral Wellness.....	40
Session Notes	51

***Just a reminder about
our new annual meeting format:***

You'll notice we started the day with our business session,
so you can enjoy an uninterrupted conference experience.

WELCOME

Hello, BRN Family! We're so glad that you've come to Harrisburg for our second annual Accelerate Conference.

At the Baptist Resource Network of Pennsylvania/South Jersey, we are aware of the 14 million people in our region who do not yet have a saving faith in Jesus Christ. Moreover, vital statistics indicate that every 4.2 minutes, one person in PA/SJ dies and enters an eternity without Jesus.

We see brokenness all around us -- broken marriages and families, violence, addictions, and apathy toward our neighbors. But Scripture tells us to *"love one another. Just as I have loved you, you are also to love one another"* (John 13:34 CSB).

In our region, we envision all 300+ of our Southern Baptist churches as strong community partners in times of need. We envision families, neighborhoods, and churches full of vitality and health. We envision more and more people calling upon the name of Jesus. In short, we envision churches accelerating Kingdom movement.

At this year's conference, we are going to unpack "SHOW," the second of three phases of the #LovePASJ initiative, whose goal is to accelerate Kingdom movement by equipping churches to focus on evangelism and compassion ministry. We believe it's more important than ever to #LovePASJ and to follow His command to love our neighbors.

We are excited to welcome WinterJam speaker Shane Pruitt, who is the National Next Gen Director for the North American Mission Board. Shane, whose personal blog has over 3 million viewers, is also a traveling communicator, evangelist, and Bible teacher. Every year he speaks to tens of thousands about the good news of Jesus Christ. In fact, Shane and his wife, Kasi, were featured as ABC's Nightly News "Persons of the Week" in August 2017. He will encourage us in our evangelism efforts, especially as we seek to reach the next generation.

We are also thankful for SEVEN, the worship team from Messiah University, and Sasha and Vita Livantsov of Voices of Ukraine, who will lead us into worship, and for our breakout speakers, who wonderfully represent our BRN family.

I earnestly pray this conference will encourage our churches (*members and pastors!*) to accelerate Kingdom movement in Pennsylvania/South Jersey and beyond.

Your Missionary to PA/SJ,



DR. BARRY WHITWORTH

*Executive Director,
Baptist Resource Network*

FACILITIES

SHERATON HARRISBURG HERSHEY HOTEL

4650 Lindle Road
Harrisburg, Pennsylvania

REGISTRATION

Registration is located in the Convention Center Lobby. You must stop by registration, even if you pre-registered online, so that we can provide you with a meeting information packet and a name badge.

COFFEE

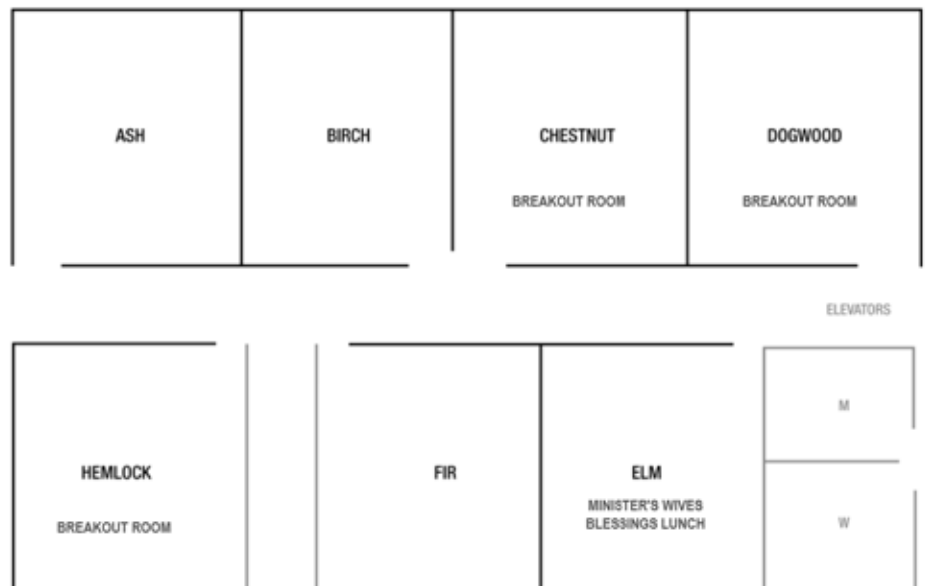
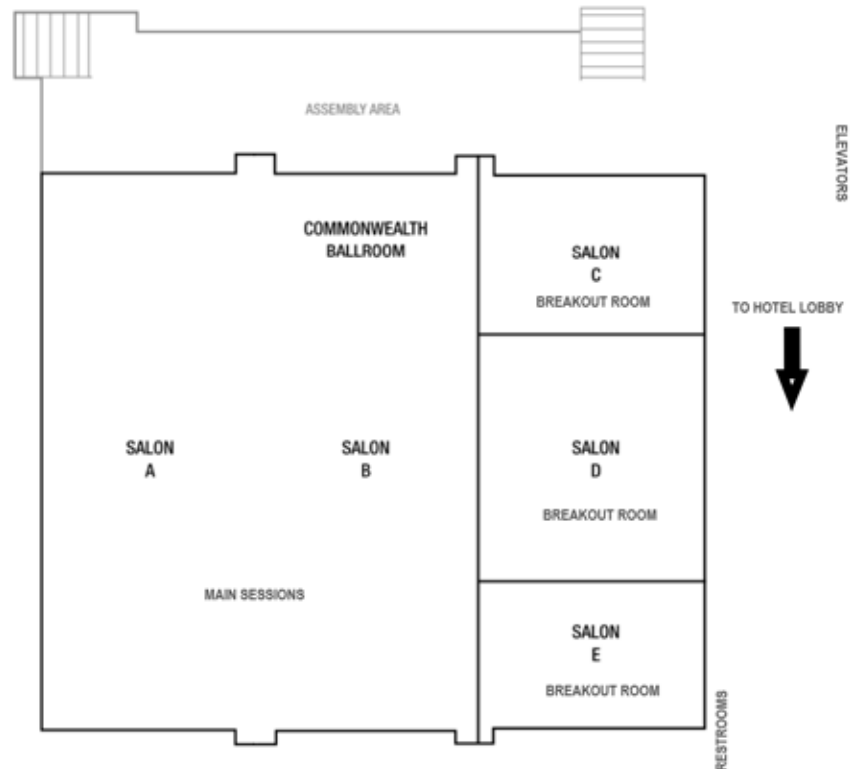
Coffee is located in the hotel lobby until 10:30 a.m.

MEALS

All meals will be in the Pennsylvania Ballroom.

NOTE

Schedule and participants are subject to change.



SCHEDULE

- 9:00 a.m.:** Welcome/Business Session
- 10:00 a.m.:** Prayer Time
- 10:15 a.m.:** Worship led by Seven of Messiah University
- 10:30 a.m.:** Conference Opening Remarks, Barry Whitworth
- 10:45 a.m.:** Worship led by Seven of Messiah University
- 11:00 a.m.:** Main Session 1: Barry Whitworth, Executive Director, Baptist Resource Network
- 11:30 a.m.:** Introduction of Breakouts/Break
- 11:45 a.m.:** Breakouts Session 1
- 12:30 p.m.:** Lunch (please take time to visit the expo!)
- 1:30 p.m.:** Worship led by Seven of Messiah University
- 1:45 p.m.:** Main Session 2: Shane Pruitt, Next Gen Director, North American Mission Board
- 2:15 p.m.:** Introduction of Breakouts/Break
- 2:30 p.m.:** Breakouts Session 2
- 3:15 p.m.:** Break
- 3:30 p.m.:** Worship led by Seven of Messiah University
- 3:45 p.m.:** Main Session 3: Shane Pruitt, Next Gen Director, North American Mission Board
- 4:15 p.m.:** Giveaways
- 4:30 p.m.:** Main Session 4: Panel Speakers
- 5:00 p.m.:** Closing, Barry Whitworth; Worship led by Seven of Messiah University
- 5:30 p.m.:** Dinner Performance by Sasha & Vita Livantsov, Voices of Ukraine

EXPO

Displays are located in the Convention Center Lobby as well as in the main hallway going towards the hotel entrance.

GIVEAWAYS

You must be present in order to receive a giveaway. No purchase is necessary. Thank you to our sponsors and vendors, who made this possible.

SPONSOR & VENDOR BINGO*

To be entered to win a gift basket, please visit at least ten (10) of our sponsors & vendors and have them mark their logo. Fill out this form and place the whole bingo flyer in the container of the gift you would like to win. All entries must be received by the start of the 3:45pm main session. Drawings will take place in the main session room after 4:15pm. *You must be present to win.



PEOPLE

AT-A-GLANCE PROGRAM PARTICIPANTS

Dewey and Kathie Aiken	NC/PA Onsite Coordinators, Baptists on Mission, Baptist State Convention of N.C.
Shannon Baker	Director of Communications, Baptist Resource Network
Crystal Brown	Administrator of Creativity, The SOAR Church, Woodbine, N.J.
Kim Carson	BRN Board Member and Collegiate Minister, PennWest California University
Brennan Coughlin	BRN Board Member and Senior Pastor, Fellowship CrossPoint Church, Trenton, N.J.
Tom Dawson	Senior Pastor, SOAR Church, Woodbine, N.J.
Dale Eberhardt	Voices of Ukraine; Member, East Shore Baptist Church, Harrisburg
Cory Hartman	Author, Global Voice Developer, New Generations
Mary Landis	Ministry Consultant, Woven Women, Baptist Resource Network
Ron Larson	Senior Pastor, First Baptist Church of Delaware, New Castle, Del.
Sasha and Vita Livantsov	Voices of Ukraine; members, East Shore Baptist Church, Harrisburg
David Ludwig	Associate Director, Church Health and Discipleship, Baptist Resource Network
Kevin Marsico	National Director, TTI USA, Lead Pastor at NorthStar Community Church, Frederick, Maryland
Macala Mays	Associate Editor, <i>BRN United</i>
Bryan McClelland	BRN Executive Board President; Senior Pastor, First Southern Baptist Church, Williamsport
Buff McNickle	Director, Compassion Ministries/Network Development, Baptist Resource Network
Fred Neal	Executive Pastor, Harvest Church, Kittanning
John Opalewski	Founder, Converge Coaching, Washington, Michigan
Shane Pruitt	National Next Gen Director, North American Mission Board
Hal Selby	Ministry Director, Refuge 461 Ministries
SEVEN	Worship Team, Messiah University, Mechanicsburg
Harrison Smith	Sr. Regional Alliance Director, Alliance Defending Freedom (ADF)
Alfonzo Toney	Mission Pastor, The SOAR Church, Atlantic County
Tim Walker	Lead Pastor, Restored Church, Wilkes-Barre
Barry Whitworth	Executive Director/Treasurer, Baptist Resource Network
Beth Whitworth	Ministry Wives Consultant, Baptist Resource Network
Stan Williams	Director, BRN Next Gen, Baptist Resource Network
Ricky Wilson	Senior Pastor, Christian Faith Fellowship, Downingtown
Brad Wingler	Lead Pastor, Edinboro (Pa.) Community Church
Attorney R. Davis Younts	Baptist Resource Network Legal Counsel, Yount's Law



PEOPLE

AT-A-GLANCE SPONSORS AND VENDORS

Mark Abernathy	Partnership Consultant, Baptists on Mission, Baptist State Convention of N.C.
Dewey and Kathie Aiken	NC/PA Onsite Coordinators, Baptists on Mission, Baptist State Convention of N.C.
Robert Albino	Church Ambassador Network Outreach Coord./Latino Engagement, PA Family Institute
Jim Bower	Bower Insurance/Brotherhood Mutual
Kyle Canty	SEND City Missionary/Church Plant Catalyst - Philadelphia, North American Mission Board
Don Davidson	Donor Relations Manager (Eastern), GuideStone Financial Services
Rob Ginder	Vice President of Sales and Marketing, Treysta Technology Management
Charles E. Grant Jr.	Executive Director of Black Church Relations and Mobilization, SBC Executive Committee
Johnathan W. Gray	President/CEO, Ministry Trust/Christian Timber Reserve
Kenton Hunt	Director, PA/NJ Disaster Relief, Baptist Resource Network
IMB Missionary (<i>unnamed for security reasons</i>)	International Mission Board, Richmond, Virginia
Hoon Im	Associate Relationship Manager-Retirement, GuideStone Financial Services
David Jackson	Replant Specialist, East Region, North American Mission Board
Cliff Jenkins	Associate Director, DMin Program, Assoc Professor of Leadership Formation, Gateway Seminary
Debbie Knowles	Volunteer, Woven Women, Baptist Resource Network
Chuck Knox	Stewardship Coach, Harvest Community Church, Kittanning, Pa.
Theresa Krieg	President, WMU of PA/SJ
Mary Landis	Women's Ministry Consultant, Woven Women, Baptist Resource Network
Brian Musser	Campus Minister/Missionary, Drexel University, Baptist Resource Network
Phil Nelson	Senior Church Mobilization Strategist, International Mission Board, Richmond, Va.
John Opalewski	Full Strength Network/Founder, Converge Coaching, Washington, Michigan
Eric Reiber	Campus Minister/Missionary, Penn State University, State College, Baptist Resource Network
Brady Rennix	Campus Minister/Missionary, Montco & DelVal Colleges, Baptist Resource Network
Nathan Russell	Funding Specialist, Ministry Trust/Christian Timber Reserve
Bryan Stine	Vice President, Program Development, Full Strength Network
Patrick Schwartz	Church Planting Catalyst, International Mission Board, Glasgow, Scotland
Rick and Jill Thompson	Missionaries, International Mission Board, American Peoples
Kurt Weaver	Director of Church Ambassador Network & Strategic Partnerships, PA Family Institute
Stan Williams	Director, BRN Next Gen, Baptist Resource Network
Josiah Winey	Journeyman Missionary, NAMB, Pittsburgh
Sam Youngs	Director of Ministry Investments, Ministry Services Team, WatersEdge

Accelerate Conference

Keynote Speakers



Shane Pruitt

National Next Gen Director, North American Mission Board

Shane serves as the National Next Gen Director for the *North American Mission Board*. He and his wife, Kasi, reside in Rockwall, Texas, with their six children – Raygen, Harper, Titus, Morris, Elliot, and Glory. He has been in ministry for over 18 years as a denominational worker, church planter, lead pastor, and student pastor. Shane is also a traveling communicator, evangelist, and Bible teacher. Every year he speaks to over a hundred thousand people about the good news of Jesus Christ. He is the author of *9 Common Lies Christians Believe: And Why God's Truth Is Infinitely Better*, which is available everywhere books are sold. He has also authored many blogs and articles that have been picked up by *RELEVANT*, *Christianity Today*, *The Christian Post*, *The Gospel Coalition*, *Church Leaders*, *Baptist Press*, and many others. He is also the co-host of the podcast, *Next Gen on Mission* (available on any podcast platform) and is a monthly guest and contributor on the *Point of View Radio Show* that airs on over 300 stations nationwide. Shane and his wife, Kasi, were also featured as ABC's Nightly News "Persons of the Week" in August 2017.



Dr. Barry Whitworth

Executive Director, Baptist Resource Network of Pennsylvania/South Jersey

Barry has been in ministry for over 30 years, serving as a mission pastor, associate pastor, church planter, pastor, interim pastor, transitional pastor and planter, church planting strategist, lead church planting catalyst, church planting director, and now executive director. Before his calling as Executive Director of the *Baptist Resource Network (BRN)* in February 2017, he was a church planting missionary and served as the Multiplying Churches Team Leader for the BRN. Barry, who has planted churches and served on church staffs in Pennsylvania, New York and Maryland, says his passion is the local church — to assist and encourage the churches in "reaching the lost [and] discipling the saved." He seeks to help Pennsylvania/South Jersey Baptists "decrease lostness," "push back darkness" and "have an impact in our generation for such a time as this." He and his wife Beth have two daughters and six grandchildren.

Accelerate Conference

Musical Guests



Worship by: **SEVEN,** ***Messiah University***

SEVEN is a group of multi-talented musicians from Messiah University who have a heart for ministry, performance and creativity. They write, collaborate, perform concerts and lead worship with great enthusiasm and expression. They represent a wonderful cross-section of the Messiah University community, with members from a variety of academic majors. SEVEN's mission is to spread the message of Jesus Christ through musical worship that incorporates each member's unique gifts and creativity.



Worship by: **Sasha & Vita Livantsov,** ***Voices of Ukraine***

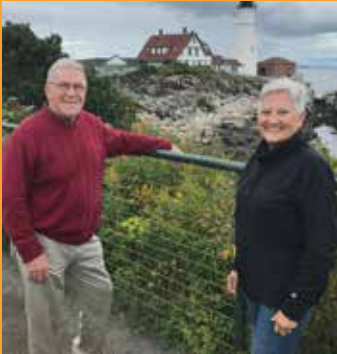
We are all devastated by the war Russia has waged on Ukraine. Baptist Resource Network churches have dedicated prayer and resources to help Ukrainians who have left their country and resettled around the world. In a powerful display of faith and resiliency, worshippers Sasha & Vita Livantsov of *Voices of Ukraine* (www.voices4ukraine.org) will lead a special time of worship during the closing dinner of the Accelerate Conference. They have been worship leaders for many years in Ukraine. Now God has called them here to be a voice for Ukraine. We will take up a love offering at the dinner to be used to help either with resettling or providing relief for refugees. We also would like to give every conference participant a backpack to fill with items helpful to those endeavors.

Breakout Sessions

FOR INDIVIDUALS & CHURCH LEADERS

Acts 1:8 Missions

Reaching YOUR Jerusalem, Judea, Samaria, and the Ends of the World



Dewey & Kathie Aiken



Fred Neal



Ricky Wilson



Brad Wingler

Panel Discussion, Moderated by Stanley Williams and Featuring:

Dewey & Kathie Aiken, On-Site Coordinators, Baptists on Mission

Dewey and Kathie Aiken are Baptists on Mission On-Site Coordinators for the Appalachian Coalfields Ministry. They also serve churches in the Baptist Resource Network and the Baptist Churches of New England, where they provide mission support and prayer. Under their leadership, several mission teams have come and renovated the BRN Volunteer House in Harrisburg. The Aikens combine a deep passion for showing the love of Christ to others with a clear understanding of the needs of mission teams.

Fred Neal, Executive Pastor, Harvest Church

"Big Fred" has served as executive pastor at Harvest Church since 2008 where they have shepherded the church growth from one campus with 350 people to a church with four campuses and about 1,400 people.

Harvest not only has an extensive community outreach effort but they are active with 15 foreign missionaries and a church-based planting effort in West Bengal, India. Fred's formal education has been split between Indiana University of Pennsylvania and Liberty University in Virginia with concentrations in criminal justice and religion. He retired from the Pennsylvania Attorney General's Office in 2008 to accept the calling into the vocational ministry after 33 years of law enforcement. Fred and his wife Anna have three adult children and seven grandchildren (soon to blossom to 10).

Ricky Wilson, Senior Pastor, Christian Faith Fellowship

A native of Coatsville, Pa., Pastor Ricky graduated from Dallas Theological Seminary in Dallas, Texas, in 1992. In addition to various church roles, Pastor Ricky has served as a guest instructor at various churches, workshops and conferences on the subjects of church planting, biblical

leadership and discipleship. In 1995, Pastor Wilson, along with his wife and children and a small group of committed believers, planted Christian Faith Fellowship, where they continue to serve. In July 2004, Pastor Wilson traveled to Zambia, Africa to participate in the Zambian Pastors Conference, teaching on the subject of small group ministry. Ever since, he has returned to Zambia yearly and has established a partnership between three churches in Zambia with three churches in the USA.

Dr. Brad Wingler, Lead Pastor, Edinboro Community Church

Brad, lead pastor of Edinboro Community Church (ECC), and his wife, Jill, have three children: JP, Haddon, and Cindy. Brad holds his doctor of ministry degree from Southeastern Baptist Theological Seminary with a focus in discipling. At ECC, Brad has led his church to host multiple local mission trips in their own communities. In his free time, Brad enjoys running ultra marathons.



PURSuing GOD'S MISSION



imb.org/impact

REACHING THE NATIONS, TOGETHER.

Together, we get to do the most important work in the world to address the greatest problem in the world – lostness. Together, we get to share the good news of Jesus among people and places who have never heard the gospel. Together, we send and sustain missionaries to be steadfastly present around the globe to share that message and plant healthy churches.

TOGETHER, WE SEE LIVES TRANSFORMED.



INTERNATIONAL
MISSION BOARD

Breakout Sessions

FOR INDIVIDUALS & CHURCH LEADERS

Culture & Context

Answering LGBTQ+, Transgender & Sexuality Questions



Harrison Smith



Hal Selby

Featuring:

Harrison Smith, Sr. Regional Alliance Director, Alliance Defending Freedom (ADF)

Harrison Smith is a Sr. Regional Alliance Director for the ADF Church Alliance and has been with Alliance Defending Freedom since 2014. His passion for the Gospel and interest in law and current affairs and how those intersect allows him to enthusiastically communicate with others. He works with major ministry and denominational leaders across the country on religious liberty issues to ensure that the body of Christ understands the current cultural and legal climate and knows how to respond via the resources available to them through the ADF Church Alliance. His heart is to see the Church boldly proclaim the Truth of the Gospel in our day!

Hal Selby, Ministry Director, Refuge 461 Ministries

Hal Selby and his wife, Lisa, are the ministry directors of Refuge 461 Ministries and are from Starkville, Mississippi. They have been married since 1987 and have three children and six grandchildren. In November of 1999, Hal confessed to Lisa that he had been secretly involved in homosexuality most of his life, including, at that time, their 12 years of marriage. This came as a shock to Lisa since Hal had been in ministry as a pastor for 20 years of his life. Through much prayer and the study of God's Word, God has healed their lives and restored their marriage. Now, out of their own healing and restoration, God has led them in this ministry to others whose lives are impacted by homosexuality.

Refuge 461 is a Christian discipleship ministry offering help and hope to individuals, couples and families whose lives are impacted by homosexuality. In addition to this, their ministry seeks to help equip the church in how to have a redemptive response to LGBTQ+ individuals.

Refuge 461 is affiliated with the North American Mission Board of the Southern Baptist Convention, the Mississippi Baptist Convention, the Golden Triangle Baptist Association in Columbus, Mississippi, and with Adaton Baptist Church in Starkville where Hal is the senior pastor.

IS YOUR CHURCH LEGALLY PREPARED?

FREE LEGAL GUIDE: **10 WAYS TO PROTECT YOUR CHURCH**

Church leaders know the culture is changing. City, state, and federal laws are changing as a result. Those laws may affect your religious freedom in surprising ways – and they could hinder your ministry. Whether you are a pastor, elder, deacon, church board member, or an advisor to church leaders, you can protect your church from increasing threats to religious freedom. Download this guide to learn how.

- **RECOMMENDATIONS:**
10 ways you can improve your church documents to provide better religious freedom protection
- **STORIES:**
Examples of churches like yours that have faced legal challenges, and how they responded
- **ENCOURAGEMENT:**
Discussion about how the local church can steward religious freedom for the good of the Church at large



DOWNLOAD THE GUIDE NOW

VISIT [ADFCHURCHALLIANCE.ORG/EBOOK](https://adfchurchalliance.org/ebook)
OR SCAN THE CODE TO GET YOUR FREE COPY:





LET'S JOIN HANDS TO MAKE AN IMPACT THROUGH LEGACY GIVING

Everyone wants to have a life with meaning. Part of that meaningful life is to live on in the memory of family and friends. Generous giving with eternal impact can indeed create a legacy for family and Kingdom ministry that gives added meaning to your life.

We urge you to pray and ask the Lord for guidance about financially giving through your resources and estate to benefit the ministry of the Baptist Resource Network and its churches.

INTERESTED?

**CONTACT CHUCK KNOX, STEWARDSHIP COACH AT (724) 991-5303
OR STOP BY THE LEGACY GIVING EXHIBIT TODAY!**

Breakout Sessions

FOR CHURCH LEADERS

Developing a Thriving Volunteer Ministry

Relieve the Burden of Doing It All



Brennan Coughlin

Featuring:

***Brennan Coughlin, Senior Pastor,
Fellowship CrossPoint Church,
Trenton, N.J.***

Brennan Coughlin is a church planter and preaching pastor at Fellowship CrossPoint Church. After eleven years teaching history in New Jersey public schools, Brennan felt called to full-time ministry. He earned a master of divinity degree from Biblical Seminary in 2011, and in 2014, he and his wife, Kathleen, moved with their four children to Trenton to

start a church in the capital city. The church began with a team of twenty sent out from Fellowship Community Church in Mount Laurel, New Jersey, and they met weekly in the Coughlins' home for Bible study. In the spring of 2015, worship services began in a living room, and eight months later, the church outgrew the space and began to worship at the Trenton War Memorial.

Brennan, a member of the Baptist Resource Network's Executive Board, longs to honor the Lord with his life

by bringing glory to God through the proclamation of the Gospel in his home, in Chesterfield, and in the surrounding communities. In his spare time, he enjoys running while listening to sermons and audiobooks. He recently received his doctor of ministry degree in expository preaching from Southeastern Baptist Theological Seminary. Brennan and Kathleen, who met while supervising seventh period study hall, have been married 11 years and are blessed with six children.



Breakout Sessions

FOR INDIVIDUALS

Digital Ministry in Today's World

Obstacles and Opportunities



Crystal Brown



Alfonzo Toney



Macala Mays

Moderated by Shannon Baker, and Featuring:

Crystal Brown,
Administrator of Creativity,
The SOAR Church, Woodbine, N.J.

Crystal L. Brown is an Administrator of Creativity for the SOAR Church. She enjoys dedicating her time to ministry related activities such as, event planning, singing, and grant writing. She is currently a SOAR Church master trainer for the New Jersey Adaptation of Coaching Boys into Men through NJ Department of Children and Families. Crystal was raised in Woodbine, where her family faithfully attended the First Baptist Church of Woodbine, now known as SOAR Church. She completed her undergraduate work at Stockton University, earning her a bachelor of science degree in public health with a concentration in environmental health. In addition, she studied Bible for one year at the Philadelphia Biblical University. For the past 16 years, Crystal has served her community in the role of a Registered Environmental Health Specialist for the Cumberland County Department of Health, and recently a part-time paralegal for Armando Ricco, Esq. in Medford, New Jersey. Helping others to succeed and

raising her two boys have been her greatest success.

Alfonzo Toney,
Mission Pastor, The SOAR Church,
Atlantic County

Pastor Alfonzo Toney Sr. is the lead pastor at SOAR Church's Atlantic County (AC) campus in Richland, N.J. He handles administrative and executive duties at SOAR AC and at the main campus in Woodbine, N.J. Alfonzo, a member of the Baptist Resource Network's Executive Board, has college experience at Atlantic Cape Community College and Delaware State University. He has served in ministry for 20 years as a deacon, youth director, media/production director, and as administrative pastor at SOAR Church for the past six years.

Pastor Toney is active in his community as a member of the Coalition for a Safe Community, and the NAACP, and serves as a role model, mentor and advocate for all whom he comes in contact with. He and his wife of 12 years, Malieka, have been blessed with a blended family, which includes four children (Danielle,

Terrance, Timothy, and Alfonzo Jr.). Alfonzo and Malieka both grew up in South Jersey and are excited about the community they serve.

Macala Mays,
Associate Editor, BRN United
Baptist Resource Network

Macala Mays is the associate editor for the BRN's weekly newsletter, *BRN United*. Her day-to-day work at the BRN includes writing articles, scheduling social media campaigns, and curating website content. She is also the host of two BRN podcast series, *50 Stories of Transformation* and *The #LovePASJ Podcast*. Macala received her bachelor's degree in journalism/public relations from Edinboro University of Pennsylvania (EUP) in 2018 and continued her studies at EUP to receive a master of arts degree in communication studies in 2021. She is passionate about communicating God's goodness through storytelling and ministering to college students as she serves alongside her husband, Robbie Mays, who is a BRN collegiate missionary at Lock Haven University in Pennsylvania.



What happened this week in the BRN Family? Your whole church can find out by subscribing to *BRN United*!



Subscribe at www.brnunited.org/news



Breakout Sessions

FOR INDIVIDUALS & CHURCH LEADERS

From Evangelism to Engagement

What is the Next Step God is Calling You To Take?



David Ludwig

Featuring:

**David Ludwig,
Associate Director of
Church Health and Discipleship,
Baptist Resource Network**

David began serving our convention in 2004 as a consultant in the area of church health, where he served until September 2013 when he joined our team full-time as the associate director of church health.

Prior to serving with the BRN, David served the Kentucky Baptist Convention as a contracted consultant, speaking and leading breakouts in the areas of discipleship and Sunday school/small groups. David has also served on the staff of small, medium, and large churches in Virginia, Kentucky, and Pennsylvania.

David is passionate about disciple-

making, and equipping pastors and leaders to develop healthy, disciple-making churches. He holds a master of arts degree from The Southern Baptist Theological Seminary in Louisville, Kentucky; and a bachelor of science degree in religion from Liberty University, Lynchburg, Virginia.

In addition, David has been trained as a church consultant by the Society for Church Consulting; has been certified as a Leadership Development Coach by Leader Breakthru and by LifeWay as a Transformational Church Consultant (trained to administer church assessments using their Transformational Church Assessment

Tool); has been trained and has served as an Intentional Interim Pastor (Transitional Pastor) and has coached and trained other men to serve in this role; and has received Spiritual Leadership Coach training by Blackaby Ministries International and coach training by the North American Mission Board. David also is a participating member of the National Revitalization Network, which connects him to revitalization resources, ongoing training, and expert revitalization leaders across the SBC.

David and his wife, Sheryl, have four daughters and eight grandchildren (including twins).

Reaching TEXAS Impacting THE WORLD

1cross

An evangelistic tool designed to share the message of the gospel in multiple languages through video/audio presentations.

Video testimonies in
60+ languages

sbtexas.com/apps



SOUTHERN BAPTISTS OF TEXAS CONVENTION



search "SBTC" to find this resource.

A resource of the Southern Baptists of Texas Convention. Paid for by Cooperative Program giving.



OF ALL THE HATS YOU WEAR, THIS MAY BE ONE OF THE MOST IMPORTANT

The Baptist Resource Network
is thankful for the many
Disaster Relief volunteers who
give their time and energy to
help others facing a crisis.

Will you join us?

LEARN MORE AT [BRNUNITED.ORG/DR](https://brnunited.org/dr)



Doctor of Ministry Northeast Cohort

**Achieve your potential in life and ministry with
Gateway's Doctor of Ministry.**

Study under Gateway President Jeff Iorg with fellow
ministers in a cohort based in Pittsburgh, PA.

Jeff Iorg and Cliff Jenkins will co-teach the
summer 2023 course in Pittsburgh.

Gateway's DMin offers local courses combined
with distance learning - no flights to California
required.

Cohort begins January 2023; apply by
November 1.

More info: gs.edu/dmin | 909.443.1718

Accelerate your ministry | Refresh your soul



Gateway Seminary

BIBLICAL theology with a MISSIONAL approach for a GLOBAL impact



Gospel



City



World

Breakout Sessions

FOR CHURCH LEADERS

How to Set Up a Compassion Ministry

Creating Gateways into your Community



Tom Dawson



Buff McNickle

Featuring:

Tom Dawson, Senior Pastor, SOAR Church, Woodbine, N.J.

Reverend Dr. Thomas Dawson, Jr. has served as the senior pastor of The SOAR Church since 1998. Prior to his call to pastorship, for 13 years Dr. Dawson held a data control analyst title at the Philadelphia Stock Market and various management titles at the Automatic Data Processing Brokerage Division, providing client support to major brokerage firms such as Merrill Lynch, Smith Barney, and Prudential.

Under the leadership of Dr. Dawson, The SOAR Church has become multicultural and has grown from a membership of 50 to over 500 and serves residents in three counties. His vision has enabled The SOAR Church to impact its community by giving over \$50,000 to local schools for Autism Awareness and thousands of coats and school supplies to those in need through the years.

Dr. Dawson's partnership with the New Jersey Food Bank allows The SOAR Church to provide food to hundreds of families monthly through its SOAR food bank. The church has also sponsored school trips for local schools and provided financial support to families in need.

Dr. Dawson is a current member of the FBI Citizens Organization, Coalition for a Safe Community, Cape May Regional Health Alliance, Cape May County Mental Health Alcohol & Drug Abuse Board, Cape May County Healthy Community Coalition, and Atlantic/Cape May Vicinage Diversity Inclusion and Community Engagement Committee. Dr. Dawson has received numerous awards and honors for his industry, leadership, support of philanthropic activities, and community service.

Buff McNickle, Director of Compassion Ministries, Baptist Resource Network

With a passion to reach people with the gospel of Jesus Christ and the missional goal to build relationships that would inspire others to grow in their faith and understanding of Jesus, Pastor Buff McNickle became a church planter of Grace Falls Church in the Atlantic County region of southern New Jersey in 2013.

During the infancy of the new church plant, he and his core team were able to interact with those who suffer from substance abuse and homelessness, began a ministry of care

and compassion to dancers in the local adult entertainment industry, provided afterschool homework help to school children at a local community center for low-income families, built relationships with the workers at a local soup kitchen, and for a small group of believers, encouraged them to break out of their traditions of being mere pew-fillers to being inspired and prepared to carry the gospel into their circle of influence.

Pastor Buff was born and raised in Mobile, Alabama. He has served in full-time ministry since 1992. He started off as a student pastor for 12 years and then transitioned to family pastor in another church. He then went on to serve at the University of Mobile as a Director of Student Leadership and Involvement where he helped build and develop leadership among the students throughout various organizations on campus. From 2008-2013, he served as a minister to singles and young adults at Idlewild Baptist Church in Lutz, Florida.

Buff and his wife Cissy are blessed to be the parents of three children, twin boys, Jedidiah and Judah, and Arabella. They live in Absecon, N.J.

Breakout Sessions

FOR WOMEN

A Pleasing Aroma

Being the Fragrance of Christ in a Smelly World



Mary Landis



Beth Whitworth

Featuring:

**Mary Landis,
Ministry Consultant,
BRN Woven Women**

Mary Landis has been the women's ministry leader at Rolling Hills Church in Verona, Pennsylvania, for over eight years. She has seen that role grow and transform greatly during her time there. She has a passion for seeing women come to know Christ, grow in their relationship with Him, disciple one another, and develop deep sister-like bonds to accomplish the work He has for them through the intricate tapestry of their varied gifts.

Mary has been married to her husband Chad for over 20 years. She is a former speech-language pathologist and is extremely blessed to be the mother of three children after years

of struggling with infertility. She still has a heart for children and people with disabilities, as she lives out some of these struggles daily with her own children. She loves to read, research, and study, and has a passion for healthy living, environmental stewardship, and homemade everything.

**Beth Whitworth,
Ministry Consultant,
BRN Ministers' Wives**

Beth Whitworth, BRN ministry wives consultant, is the wife of Barry, a missionary, pastor and currently the Executive Director/Treasurer for the Baptist Resource Network of PA/SJ. They celebrate their union of over 40 years and are the parents of two

grown daughters, two sons-in-love and six grandchildren.

Having been a PK as a youth and in ministry with Barry for many years, Beth is passionate about caring for the wives and families of ministers in PA/SJ. Currently, Beth is on LifeWay's national panel of women's leaders as the representative of ministers' wives in PA/SJ.

Beth previously served the local church in children's ministry, missions education, youth ministry and women's discipleship. As a pastor's wife, she has counseled women and conducted premarital counseling. Altogether, she has served over 28 years in full-time Christian service.

She is also a prayer warrior who believes constant communication with the Father is vital for the disciple of Jesus Christ.

BRN Woven Women
invites you!

Do you see someone skilled in
their work? They will serve before
kings. Proverbs 22:29

Leadership Development Conference

Featuring Jenny Provin,
Certified Leadership
Coach and Consultant
with the South Carolina
Baptist Convention

November 11, 9-3 pm
BRN Hub, Harrisburg
\$50 per person

Register Today:
brnunited.org/wwldr



Next Gen leaders are invited to join a monthly cohort



**To learn more,
Contact Stanley Williams
BRN Next Gen Director at
stanw@brnunited.org**

Breakout Sessions

FOR CHURCH LEADERS

Prepared & Protected

Legal Questions Your Church Should Be Asking



Davis Younts

Featuring:

***Davis Younts, Esq.,
BRN Legal Counsel;
Attorney, Younts Law***

Attorney R. Davis Younts is a 1999 graduate of Liberty University, and he earned his J.D. in 2002 from the Dickinson School of Law at Pennsylvania State University. He is a recipient of the Association of Trial Lawyers of America Trial Advocacy Award, and he is admitted to practice in military courts, Pennsylvania courts,

and in the U.S. District Courts for the Middle and Western Districts of Pennsylvania.

A former prosecutor, JAG, and number one ranked Senior Defense Counsel in the Air Force, he dedicates his practice to providing strategic criminal defense services in military, federal, and state court.

After a decade of military service, Attorney R. Davis Younts continues to fight for freedom – your freedom under the U.S. Constitution – and

for the rights of active duty service members, veterans, and civilians who face criminal charges or simply need candid, trustworthy legal advice. If you are accused of a crime, he will review the charge against you, craft an effective strategy for your defense, advocate aggressively for the justice you deserve, and bring your legal matter to its best possible outcome.

Learn more at yountslaw.com.



JAMES O. BOWER INSURANCE, INC.

5115. E. TRINDLE ROAD, MECHANICSBURG, PA 17050
(717) 763-5668 | (800) 326-7200
FAX (717) 763-5517

Insuring Churches, Schools and Camps in Pennsylvania

We offer insurance protection for churches, schools, and related ministries with comprehensive coverages, competitive rates, and quality service. Some of our unique coverages for schools include:

School Counseling Liability
Educational Preparation Liability
Broad Scope Media Liability

Religious Freedom Protection
Sexual Acts Liability
Security Operations Liability

STABILITY. TRUST. STEWARDSHIP.

Learn more:

800.326.7200
www.bowerins.com



An agency representing
**BROTHERHOOD
MUTUAL**

Breakout Sessions

FOR CHURCH LEADERS

Showing Self Compassion

Engaging Burnout and Emotional Health



John Opalewski

Featuring:

John Opalewski
Founder, Converge Coaching,
Washington, Michigan

John Opalewski is a graduate of Oral Roberts University. He served as a pastor for 15 years. He has worked in the business world for nearly two decades, serving in multiple leadership roles. John's experience as a leader in both the church and business

arenas has made him a sought-after international speaker, consultant and mentor. He and his wife Laura founded Converge Coaching in 2012. Converge Coaching exists to promote a working model that enables a leader to be effective in their role while maintaining health in their personal life. The model promotes a foundationally sound approach to mental/emotional health, to proper boundary-setting in terms

of relationships and schedule, and the priority of a leader's family over work. John was one of the first caregivers for the Full Strength Network and currently leads peer group huddles for pastors. He personally experienced burnout and depression while pastoring and he has written several pieces about burnout.

**ACCELERATE
CONFERENCE
EMCEE**

Kevin Marsico



Breakout Sessions

FOR CHURCH LEADERS

You are Not in Control of Your Results

Comparing Success Metrics with Faithful Obedience



Cory Hartman

Featuring:

Cory Hartman,
Global Voice Developer at New Generations; Author, From Show Up to Grow Up, Future Church, Improv Leadership, and more

Cory Hartman (DMin, Gordon-Conwell Theological Seminary) is an author and collaborator on multiple

books on church leadership, including *Future Church: Seven Laws of Real Church Growth*. He currently serves as Global Voice Developer at New Generations, which empowers ordinary people all over the world to create chain reactions of disciples making disciples.

He previously co-designed

consulting and training processes with the Future Church Co. and served for 13 years as a pastor in Pennsylvania and New Jersey. Raised in central New York State, Cory now lives with his wife, Kelly, and four children in Hollidaysburg, Pennsylvania.

National Director, TTI USA, Lead Pastor at NorthStar Community Church, Frederick, Maryland

Kevin Marsico serves as the National Director for TTI USA. He planted his first church almost 20 years ago in the suburbs of Washington, D.C. That church has planted other churches regionally, nationally and internationally. Kevin has worked with dozens of denominations and networks and spends the majority of his time training and challenging movement leaders and church planters to start evangelistic churches that will help reach this generation for Christ. He has a bachelor of science degree from Columbia International University and did his graduate studies at The Southern Baptist Theological Seminary. Kevin and his wife Zandra have four children.

SAFE, AFFORDABLE COACHING & COUNSELING FOR MINISTRY LEADERS



**A Wellbeing
Membership
Designed To
Help You Live
& Lead Well.**

AFFORDABLE COUNSELING

Confidential and professional help you need

PRACTICAL COACHING

A customized plan to accomplish your goals

MINDFULNESS CHECK-INS

Tools to help you track your wellbeing

STRENGTHENING RESOURCES

Services to help you thrive in life and ministry



LET'S CHAT!

info@fullstrength.org
fullstrength.org

Panel Discussion

FEATURING:



KIM CARSON
*Collegiate Minister,
PennWest California University*



TOM DAWSON
*Pastor, SOAR Church,
Woodbine, N.J.*



RON LARSON
*Pastor, First Baptist Church
of Delaware, New Castle, Del.*



SHANE PRUITT
*National Next Gen Director,
North American Mission Board*



TIM WALKER
*Lead Pastor, Restored Church,
Wilkes-Barre, Pa.*



STAN WILLIAMS
*Collegiate Ministry Director,
Baptist Resource Network*

MODERATED BY:



KEVIN MARSICO
National Director of TTI USA



BARRY WHITWORTH
*Executive Director,
Baptist Resource Network*

**Text your
questions to
717-652-5856**

Thank you!

Accelerate Sponsors

Thank you to our generous sponsors!



**CHRISTIAN
TIMBER
RESERVE**



**FULL STRENGTH
NETWORK**



**Georgia Baptist
Mission Board**



Ministry Trust



NC BAPTISTS



NAMB



**South Carolina
Baptist Convention**



Accelerate Vendors

Thank you to our many vendors!



BRN
Legacy
Giving



CHURCH
AMBASSADOR
NETWORK



GATEWAY SEMINARY



INTERNATIONAL
MISSION BOARD



JAMES O. BOWER
INSURANCE, INC.



Send
Relief



WMU® God's mission.
Our passion.





**Send
Relief**

**Make Send Relief your first
stop for compassion ministry:**
Training, Coaching, Mission Trips

SendRelief.org

A SOUTHERN BAPTIST GLOSSARY

ACCELERATE CONFERENCE: The Baptist Resource Network holds this annual meeting/gathering each autumn to report on the accomplishments and vision of the state convention and to provide inspiration, training and encouragement to churches.

ANNIE ARMSTRONG EASTER OFFERING (AAEO): An offering held around Easter to support the field work of the North American Mission Board.

ANNUAL CHURCH PROFILE (ACP): Also known as the annual letter, this is the annual report sent from the local churches to the state convention.

ASSOCIATION: A group of churches that cooperate regionally.

BAPTIST FAITH & MESSAGE (BF&M): The list of beliefs held by Southern Baptists.

COOPERATIVE PROGRAM (CP): The Cooperative Program is Southern Baptists' unified plan of giving through which cooperating Southern Baptist churches give a percentage of their undesignated receipts in support of their respective state convention and the Southern Baptist Convention missions and ministries. www.brnunited.org/cp

ETHICS & RELIGIOUS LIBERTY COMMISSION (ERLC): This national entity addresses specific moral issues in broader cultural conversations.

GUIDESTONE: A SBC entity that provides retirement accounts and taxation information for ministers.

INTERNATIONAL MISSION BOARD (IMB): The missionary sending agency of the SBC that deploys outside of North America.

LIFEWAY CHRISTIAN RESOURCES: The publishing house of the SBC, Lifeway is one of the world's largest providers of Christian resources.

LOTTIE MOON CHRISTMAS OFFERING (LMCO): An offering held around Christmas to support the field work of the International Mission Board.

NORTH AMERICAN MISSION BOARD (NAMB): NAMB assists Southern Baptists in their task of fulfilling the Great Commission in the United States, Canada and their territories through a national strategy for sharing Christ, starting churches and sending missionaries, in cooperation with Acts 1:8 partners.

WOMAN'S MISSIONARY UNION (WMU): A missions education, prayer support, and involvement organization that also promotes the Annie Armstrong and Lottie Moon offerings.

DO WELL.
DO RIGHT.
DO MORE.®

GuideStone® offers employee benefits and **financial services guided by Christian values.**

Find out how we can help you align your faith and finances at GuideStone.org.


GuideStone®

Retirement | Insurance | Investments | Property and Casualty

MISSION STRATEGY



The BRN exists to resource and service churches all over Pennsylvania and South Jersey. It is our desire to take care of pastors and to come alongside churches and help them take the next step God is calling them to take. We do this through a four-step mission strategy:

ASSESS: *Discover Your Current Reality*

An honest and detailed look at your overall ministry, defining where you've been, determining where you are, and discovering where you can go.

ASSIST: *Determine Your Next Step*

Interpreting what you have discovered, prioritizing a next step, and developing fresh strategies to meet the needs and vision of that next step.

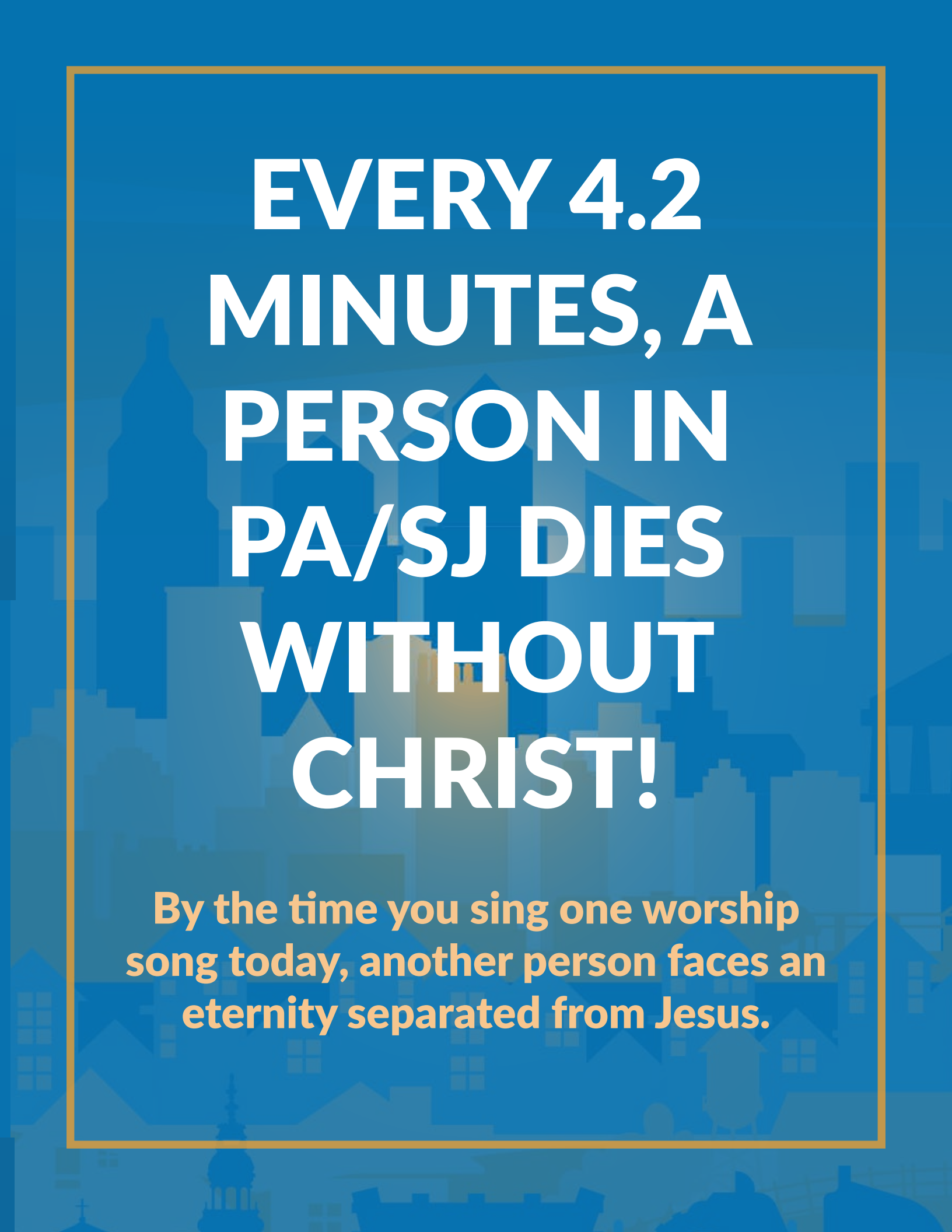
ACTIVATE: *Implement Your Next Step*

Encouraging individuals, ministries, and churches to implement strategies and goals developed by the assistance of the BRN and the guidance of the Holy Spirit.

ADVANCE: *Help Others with Their Current Reality*

Enabling churches who exhibit dynamic biblical behavior and movement (moving and leading out) to contribute to the growth and advancement of the Kingdom within the BRN and beyond.

ACCELERATING KINGDOM MOVEMENT

A stylized, blue-toned city skyline with various building silhouettes, including a prominent dome and spire, serves as the background for the text.

**EVERY 4.2
MINUTES, A
PERSON IN
PA/SJ DIES
WITHOUT
CHRIST!**

**By the time you sing one worship
song today, another person faces an
eternity separated from Jesus.**

Introducing:



PHASE 2 OF
#LOVEPASJ, LOVING
OUR NEIGHBORS IN
PENNSYLVANIA AND
SOUTH JERSEY

SHOW

WHO'S ON YOUR WATCH?

Every 4.2 minutes, a person in PA/SJ dies without Christ. Let's show Christ's love before it's too late!

#LovePASJ's Phase 2 kit seeks to help churches evangelize the neighborhoods where they did exegesis and prayerwalking. As a natural next step to learning about their communities, Phase 2 of "KNOW, SHOW, GROW" offers resources to equip participants to start meeting revealed needs through compassion ministries and evangelism. This year's kit also highlights evangelism resources available for individuals and groups.

Haven't had a chance to work on Phase 1 yet? No worries! Contact the BRN's Help Desk (helpdesk@brnunited.org) today to get your kit!

www.lovepasj.com

Phase 2 resources include Compassion Ministry Planning Guides, a Prayer Guide, Small Group Bible Study, Evangelism Tracts, an EvangeCube, a Gospel Presentation App, and more!



KNOW | SHOW | GROW

We must do the works of Him who sent Me while it is day. Night is coming when no one can work! (John 9:4)

INTRODUCING PASTORAL WELLNESS

Because we care about the health of our pastors and their families, we offer these initiatives.

Ministry can be exceptionally lonely, so the Baptist Resource Network offers an extended support network, prayer encouragement, and retreats and other events to help refresh our partnering churches' leaders, pastor's wives, and families.

We come alongside lead pastors in four ways:

RECREATION:

The BRN offers free Pastor Blessing events and gatherings, such as a day at the golf range or other special outings, for pastors, pastor couples and/or pastor families. These events provide pure fun and camaraderie with fellow ministry leaders.

RESPITE:

Ministry can be quite tiring. The BRN offers pastors and their families free use of its Guest House in Harrisburg, where they can enjoy a quiet time away from the demands of ministry. This well appointed home is situated close to several restaurants and recreation.

RESTRENGTHENING:

Through a vital partnership with Full Strength Network (FSN), the BRN offers free monthly counseling or coaching for the pastor and his wife and family. FSN provides a wellbeing membership for pastors and church staff to live and lead at full strength. BRN ministry leaders have the permission, privacy and provision to access professional experts and confidential resources.

REASSURANCE:

GuideStone Financial Services serves churches and organizations with products and services that promote financial health and spiritual wellness. The BRN partners with GuideStone to provide free protection benefits and retirement contributions for qualified candidates. The BRN also offers Legacy and Estate Planning for churches, individuals and families.



PASTORAL WELLNESS



RECREATION

Free Pastor Blessing events/gatherings

RESPITE

Free use of BRN's Guest House

RESTRENGTHENING

Free counseling and coaching

REASSURANCE

*Free GuideStone benefits and
Legacy and Estate Planning*



Bring Full Strength To Your Team.

For less than \$15 a month per member, give access to your team to help them thrive in life and ministry.

Provide Counseling

Provide licensed, confidential counseling and coaching for your staff with a trusted external ministry partner. This will encourage ministry leaders on your team to seek help when they need it the most. Through coaching and counseling (up to 12 times per year), your staff will grow in ways like never before with the help of our network professionals.

Give Growth Resources

Provide access to expert facilitated peer huddle coaching sessions designed to maximize ministry potential.

Teach Mindfulness

Our resources and our mindfulness check-in app will help your staff understand the importance of staying in tune with 6 areas of wellbeing.

MEMBERSHIP PERKS

- ✓ PROFESSIONAL COUNSELING
- ✓ CUSTOMIZED COACHING
- ✓ WELLBEING CHECK-INS & RESOURCES

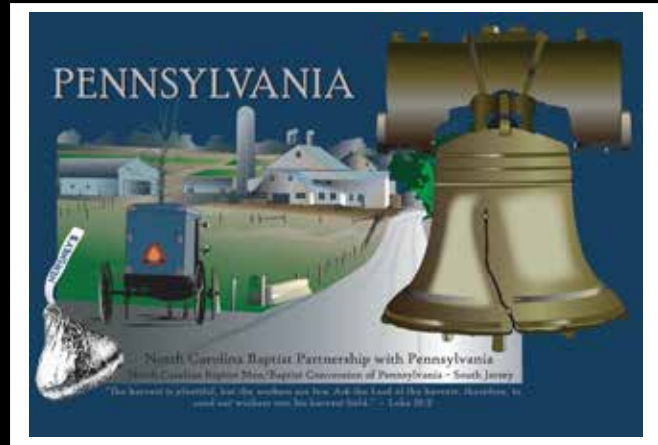


LET'S CHAT!

info@fullstrength.org

fullstrength.org/groups

The North Carolina / Pennsylvania Baptist Partnership



What's This?:

An avenue through which North Carolina Baptist churches, associations, and individuals have opportunity to partner with Pennsylvania Baptist congregations, church plants, and ministries in fulfilling the God-given task of reaching the lost for Christ.

What do
Partnership
Teams do?:

NC Partnership teams have served all around the world in many different ways:

Bible School
Backyard Bible Clubs
Community Surveys
Revival Teams
Youth and Children's Camps
Music ministry

New Construction
Renovation of existing facilities
Painting
Landscaping and cement work
Sports clinics and camps
Leadership Training **...And More!**

What can a
Partnership
team do for me
and my church?

The purpose of a NC Partnership team is to partner with you in reaching your community for Christ. This could include a direct ministry such as a Backyard Bible Club, sports camp, evangelism, and other outreach activities – OR - one that better equips your church *for* ministry – such as leadership training or facility construction or renovation.

How much will
having a
Partnership
team cost?

NC Partnership teams pay their own way to the field. They are also prepared to pay their own housing, transportation, and meals *if necessary*. If it's possible for them to stay in your church facility and/or for your church to provide one meal a day for them – that helps greatly, but is not required. Also, most VBS or Park Party teams are willing to bring some materials if needed. Construction and renovation-type teams usually expect materials to be provided by the requesting church or organization – although on occasion, they may be willing to contribute toward materials if needed.

How do I go
about requesting
a team from
North Carolina?

Pray about how you might use a volunteer missionary team to assist you in fulfilling your ministry. Fill out one (or more!) of the NC Partnership Volunteer Request Forms (brnunited.org/partner/bscnc). Send the form to Mark Abernathy, Baptists on Mission (BOM). We will be glad to receive requests throughout the year, but most of our churches begin their missions planning 8-10 months in advance, and will be eager to see a list of requests beginning in October. So please submit the request as soon as possible.

What happens
then?

Baptists on Mission will work to promote your project among our churches here in North Carolina (and beyond via our website!) and help find a team to fill it. While we cannot guarantee a team to fill your request, we will promote it throughout the year in a variety of ways. When a team shows interest, the team leader will be put in direct contact with you. If you both feel it is a good fit, you both will set the dates of service and work out all the necessary details.

If you have any questions about the North Carolina/Pennsylvania Partnership, please feel free to contact:

Mark Abernathy, Baptists on Mission (919-459-5607; mabernathy@ncbaptist.org) or
Dewey and Kathie Aiken, NC/PA On-Site Coordinators (828-553-7694; dewey_kate@hotmail.com)

Baptists on Mission is an auxiliary of the Baptist State Convention of North Carolina

- From *our* home to *yours*. -



is *proud* to
partner with

BAPTIST RESOURCE
NETWORK OF PA/SJ

We are all in this together.



GABAPTIST.ORG



MISSIONS
GEORGIA BAPTIST

Gifts of Georgia Baptists through the Cooperative Program enable us to partner together in fulfilling the Great Commission.

Our Only Hope



Yes, my soul, finds rest in God; My hope comes from Him. Truly He is my rock and my salvation; He is my fortress, I will not be shaken.

Psalm 62: 5-6 (NIV)



Contact Theresa Krieg at TheresaBKrieg@gmail.com for information.

STAY CONNECTED!

BRN UNITED

Subscribe to the weekly e-newsletter of the Baptist Resource Network of Pennsylvania/ South Jersey, which features news, events and resources of interest to Southern Baptists in our region. brnunited.org/news

#LOVEPASJ DEVOTIONAL

Sign up for this 30-day devotional, delivered five days a week for six weeks, which helps church leaders and members love their neighbors and seek to reach them for Christ. lovepasj.com

BRN HELP DESK

Have questions? Need a resource? Feel free to reach out to the Baptist Resource Network's Help Desk. Email helpdesk@brnunited.org or call or text (717) 652-5856.

Bridging the Gap Between Church and State

Join us as we work together to see a world where God is honored, religious freedom flourishes, families thrive and life is cherished.



PENNSYLVANIA
Family Institute
Protect the Family. Preserve the Future.



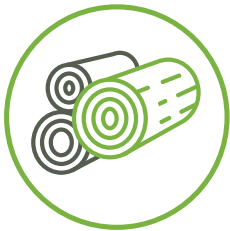
**CHURCH
AMBASSADOR**
NETWORK

pafamily.org



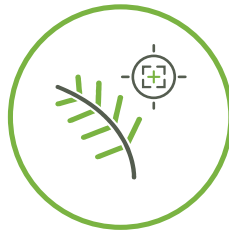
SUPPORT YOUR CHURCH THROUGH TIMBER!

WAYS TO GIVE



CUTTING

Give a
cutting
or thinning



LEASE

Give pine straw
or hunting
income



PROPERTY

Give all or
part of your
property

Learn More or Get Started Today!

www.christiantimber.org



**CHRISTIAN
TIMBER
RESERVE**



3.13%

13-Month Term Investment

Limited-Time Special Interest Rate*

Great returns that maximize Kingdom impact. Available to Southern Baptist Churches and like-minded ministries.

OPEN AN ACCOUNT TODAY:

WatersEdgeServices.org/grow

800-949-9988



*Not available to individual investors. Limited-time special interest rate available for newly invested funds, not for funds currently invested with WatersEdge. This 13-month investment will be automatically extended for an additional 12-month term at maturity, absent client instruction, subject to our Offering Circular and individual state requirements. WatersEdge securities are subject to certain risk factors as described in the Offering Circular and are not FDIC or SIPC insured. NOTICE: This is not an offer to sell WatersEdge securities and we are not soliciting you to buy our securities. WatersEdge offers and sells securities only in states where authorized. This offering is made solely by our Offering Circular.

For all of you who continue when the rest of the world says stop...

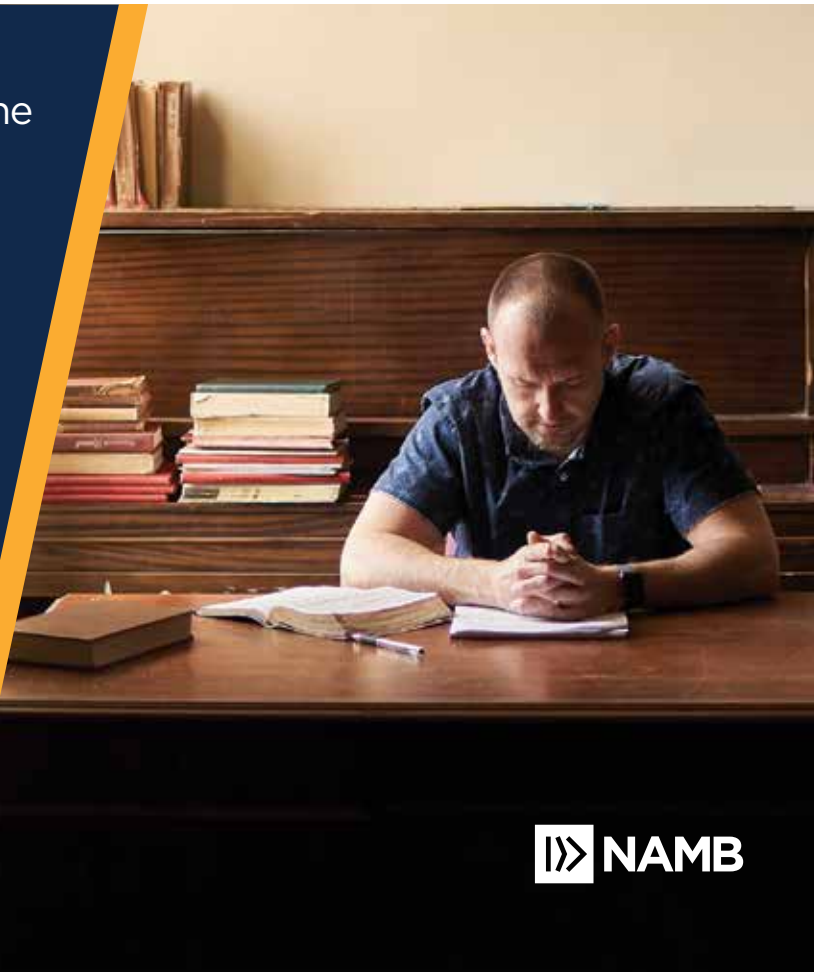
We know the work you do is rewarding *and* challenging. You're not alone. Your work matters.

Thank you for faithfully serving!

As always, we are here to help you move the mission forward.



namb.net



Relieving IT Anxiety For Pennsylvania & Maryland Non-profits Since 1995

TREYSTA is right in your backyard. We help non-profits throughout Central PA remove the anxiety from their Information Technology systems.

Let us take care of your IT.

717-337-1300

www.teamtreysta.com





WE ARE ON MISSION *Together*

We are on mission together.

Together we are part of a movement to see the gospel advance. We partner to resource, connect and mobilize the Church to reach communities and the nations for Christ, in North Carolina and beyond. Visit ncbaptist.org to learn more.



@ncbaptist
#onmissiontogether

NCBAPTIST.ORG

Congratulations and blessings Baptist Resource Network on this year's Accelerate Conference!

All of us here at the South Carolina Baptist Convention *love, support, and are praying* diligently for you!

We are thankful for the work you are doing in Pennsylvania and South Jersey and have no doubt the Lord will continue to bless your efforts there!

We see a day when every life is saturated and transformed by the hope of the Gospel!



**SOUTH CAROLINA
BAPTIST CONVENTION**

WWW.SCBAPTIST.ORG

  /SCBAPTIST   @SCBAPTIST



BAPTIST RESOURCE NETWORK OF PA/SJ

THANK YOU

to the following for making today possible:

Best Printing USA, Norwalk, CT

BRN Executive Board

BRN Team Members

Conference Attendees

Conference Presenters

Conference Volunteers

Sheraton Harrisburg Hershey Hotel

Sponsors & Vendors

Stray Production Services

and finally, our BRN churches and partners!

*Your generous support of the Cooperative Program makes this ministry possible
and fuels evangelism and outreach in our local churches and all over the world! Thank you!*

[illegible]

This image shows a full page of blank white paper with horizontal ruling lines. The lines are evenly spaced and run across the width of the page, providing a template for writing or drawing. There are no margins, text, or other markings present.

[illegible]

This image shows a blank sheet of white paper with horizontal ruling lines. The lines are evenly spaced and run across the width of the page. There are no margins, text, or other markings on the paper.

Baptist Resource Network presents

ADVANCE

EVANGELISM CONFERENCE



**MARCH 20,
2023**
CALVARY CHURCH,
STATE COLLEGE

Featuring:

- › Nathan Lorick, Executive Director for the Southern Baptists of Texas Convention
- › J.J. Washington, Director of Personal Evangelism, North American Mission Board

PLUS BREAKOUTS:

- › Evangelism Strategies to Reach Adults
- › Evangelism Strategies to Reach Youth & Children
- › Evangelism Strategies to Reach the Broken

ADVANCEPASJ.COM